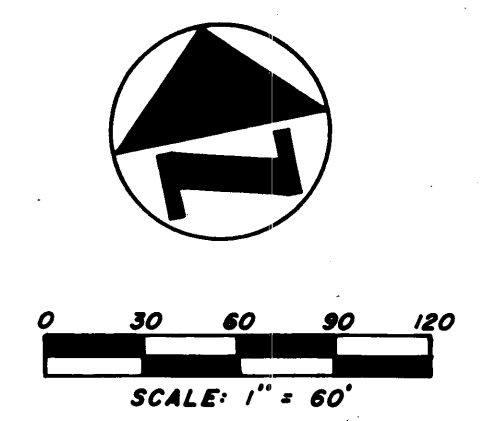
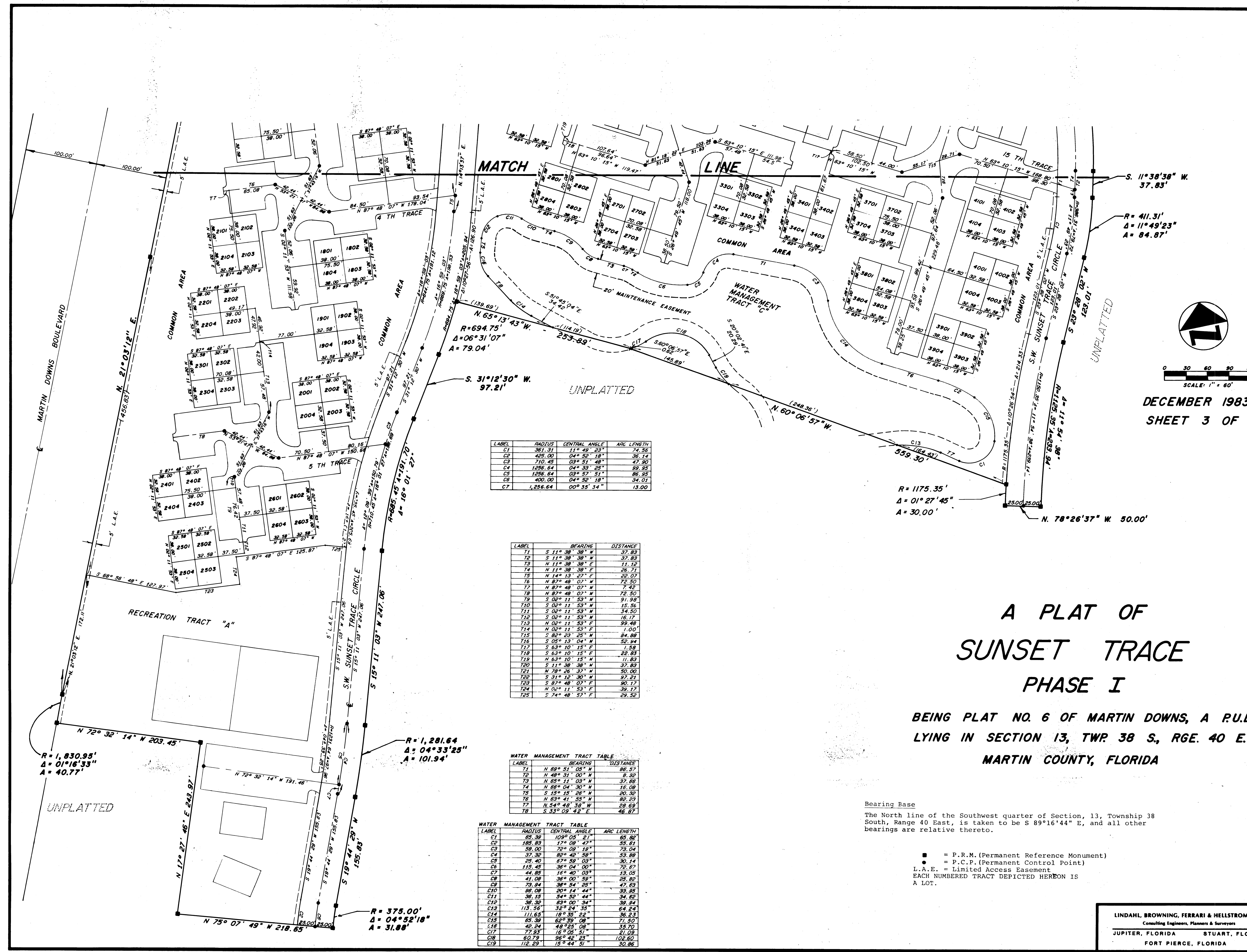


I, LOUISE V. ISAACS, CLERK OF THE CIRCUIT COURT OF MARTIN COUNTY, FLORIDA, HEREBY CERTIFY THAT THIS PLAT WAS FILED FOR RECORD IN PLAT BOOK 9, PAGE 53, MARTIN COUNTY, FLORIDA, PUBLIC RECORDS, THIS DAY OF _____ A.D. 19 ____.

LOUISE V. ISAACS, CLERK CIRCUIT COURT MARTIN COUNTY, FLORIDA

BY _____ DEPUTY CLERK

FILE NO. _____



DECEMBER 1983
SHEET 3 OF 3

LABEL	RADIUS	CENTRAL ANGLE	ARC LENGTH
C1	361.31	11° 49' 23"	74.56
C2	425.00	04° 52' 18"	36.14
C3	710.43	03° 51' 48"	41.92
C4	1256.64	04° 33' 25"	99.95
C5	1256.64	03° 57' 51"	86.95
C6	400.00	04° 52' 18"	34.01
C7	1,256.64	00° 35' 34"	13.00

LABEL	BEARING	DISTANCE
T1	S 11° 38' 38" W	37.93
T2	S 11° 38' 38" W	37.93
T3	N 11° 38' 38" E	11.12
T4	N 11° 38' 38" E	26.71
T5	N 14° 13' 22" E	22.07
T6	N 87° 48' 07" N	72.50
T7	N 87° 48' 07" W	7.42
T8	N 87° 48' 07" W	72.50
T9	S 02° 11' 53" N	31.98
T10	S 02° 11' 53" N	15.56
T11	S 02° 11' 53" N	34.50
T12	S 02° 11' 53" N	16.17
T13	N 02° 11' 53" E	92.48
T14	N 02° 11' 53" E	1.00
T15	S 82° 23' 25" W	84.88
T16	S 05° 13' 04" W	52.94
T17	S 63° 10' 15" E	1.58
T18	S 63° 10' 15" E	22.93
T19	N 63° 10' 15" W	11.83
T20	S 11° 38' 38" N	37.93
T21	N 78° 26' 37" N	50.00
T22	S 31° 12' 30" W	97.21
T23	S 87° 48' 07" E	90.17
T24	N 02° 11' 53" E	39.17
T25	S 74° 48' 57" E	29.32

LABEL	BEARING	DISTANCE
W1	N 89° 51' 05" N	86.57
W2	N 48° 31' 00" N	8.92
W3	N 85° 11' 03" N	37.68
W4	N 85° 04' 30" N	15.08
W5	S 15° 15' 26" N	20.32
W6	N 63° 41' 55" N	82.29
W7	N 54° 48' 38" W	28.69
W8	S 33° 09' 42" E	46.87

LABEL	RADIUS	CENTRAL ANGLE	ARC LENGTH
C1	85.39	109° 05' 21"	65.82
C2	188.83	174° 08' 47"	53.21
C3	58.00	72° 09' 18"	73.04
C4	37.32	82° 42' 58"	53.88
C5	25.40	87° 58' 03"	30.14
C6	115.45	96° 04' 00"	72.57
C7	44.85	16° 40' 03"	13.05
C8	41.08	36° 00' 59"	25.82
C9	73.04	38° 54' 25"	47.83
C10	98.08	20° 14' 44"	53.85
C11	36.15	34° 52' 44"	34.82
C12	38.36	63° 00' 34"	38.54
C13	113.56	32° 24' 35"	64.54
C14	111.65	18° 35' 22"	36.23
C15	85.39	62° 39' 08"	71.50
C16	42.24	48° 25' 08"	33.70
C17	77.83	18° 02' 51"	21.03
C18	60.79	96° 42' 23"	102.60
C19	112.29	15° 44' 31"	30.86

A PLAT OF SUNSET TRACE PHASE I

BEING PLAT NO. 6 OF MARTIN DOWNS, A P.U.D.
LYING IN SECTION 13, TWP. 38 S., RGE. 40 E.
MARTIN COUNTY, FLORIDA

Bearing Base
The North line of the Southwest quarter of Section 13, Township 38 South, Range 40 East, is taken to be S 89°16'44" E, and all other bearings are relative thereto.

■ = P.R.M. (Permanent Reference Monument)
● = P.C.P. (Permanent Control Point)
L.A.E. = Limited Access Easement
EACH NUMBERED TRACT DEPICTED HEREON IS A LOT.

LINDAHL, BROWNING, FERRARI & HELLSTROM, INC. Consulting Engineers, Planners & Surveyors	
JUPITER, FLORIDA	STUART, FLORIDA
FORT PIERCE, FLORIDA	3 3